

With the market being flooded with low cost kiosks from the Far East and Eastern Europe, Dicoll have decided to create a budget kiosk but built it in the UK at Dicolls factory in Reading ensuring our high quality engineering and quality standards are retained.

With a small footprint this unit is ideal in situations where floor space is limited. Dicoll Kiosks are also designed to be wheelchair friendly in keeping with DDA guidelines.

The Classic Kiosk is manufactured from powder coated mild steel and extruded aluminium in a modular design using the latest technology and manufacturing techniques. This allows our factory engineers to assemble the kiosks easily and quickly therefore cutting down on manufacturing time and labour costs.

The Classic Kiosk can be customised with a range of peripherals to ensure a best-fit solution for your organisation. Should you require something completely bespoke, Dicoll also offer a full solution design service.

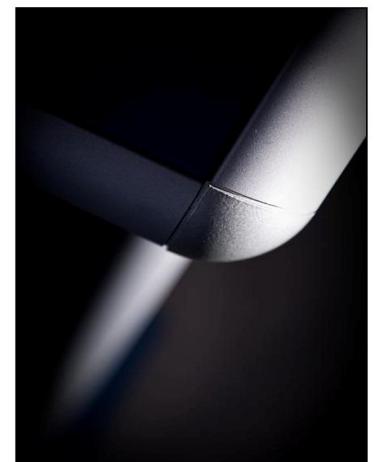
Benefits:

- Improve accessibility
- Stylish & robust design
- Easy use by children, adults and wheelchair users

Applications:

- e-learning
- Customer orientation
- Multi-media presentations
- Product/service information

Should you require something completely bespoke, Dicoll also offer a full solution design service.



Display	17" Colour LCD
Touch Screen	Resistive Touch Screen
Dimensions	540mm wide x 1200mm High x 400mm Deep
Finish	Powder Coated Mild Steel
Computer Specifications	Intel Dual Core E1400 1.8Ghz, 1GB DDR2, 160GB HD, Windows XP or Windows 7. Upgrade options available.
Options	Other options: Integrated stereo speakers, WIFI network connection, 3" Thermal Printer